

CariPure is an intelligent point-of-entry, membrane-based, water purification unit. It provides safe, delicious drinking water by removing high-molecular-weight substances, colloidal materials, bacteria, diseases like leptospirosis, parasites like Cryptosporidium and giardiasis, cysts, viruses, fungi, water-soluble heavy metals, and chlorine without requiring frequent maintenance. In addition, CariPure provides built-in spectral analysis of your water by scrutinizing it for pollution. Its built-in computer allows you to schedule the frequency for self-cleaning, and monitor for power failure while its battery backup ensures an uninterrupted water supply.



SYSTEM INCLUDES

- > Water purification membranes
- > Real-time multispectral water quality analyzer
- > Internal computer with wireless and Bluetooth capabilities
- > Battery backup supplying up to 3 hours of use
- > Water flow sensor
- > Water pressure sensors
- > Unit failure detection and warning
- > One or two pressure tanks

OPERATIONAL CONCEPTS

- > Automated point-of-entry water purification
- > Permanent placement water purifier

OPTIONAL FEATURES

- > External disk filter for high-turbidity water sources
- > External granular activated carbon/carbon block filter

CERTIFICATIONS

- > All internal membranes are made in the USA in ISO 9001:2008 certified facilities.
- > Nanofiltration membranes are NSF 16 certified when used.

SONDE ANALYTIC TECHNIQUE (measurements)

- > Total organic carbon
- > Chemical oxygen demand
- > Spectral absorption coefficient (UV254)

DIMENSIONS: 29" x 42" x 8" (73.66 x 106.6 x 20.3 cm)

WEIGHT: 175 lb

CONTAMINATION REMOVAL:

Organic and inorganic contamination

WATER SOURCE:

Cistern, well, river, lake, borehole, Municipal water

PORT SIZES: 3/4" NPT

CAPACITY: 216 gph (817 lph)

DATA CONNECTION: Bluetooth/wireless

POWER CONNECTION:

12-24 VDC, 115-230 VAC, and 24 VDC solar

MAINTENANCE REQUIREMENTS:

Operates 3-5 yrs before needing maintenance. With the carbon option, quarterly replacement is required. (*Duration dependent upon volume and loading.*)

MINIMUM TO MAXIMUM WATER TEMPERATURE:

32°F to 104°F (0°C to 40°C)

FEED PRESSURE MAXIMUM: 93.75 psi (646.3 kPa)

TYPICAL OPERATING PRESSURE: 43.5 psi (3 bar)

MAXIMUM PRESSURE DROP: 13 psig (0.9 bar)

CHLORINE TOLERANCE: 25,000 ppm

WATER RECOVERY RATE: up to 95%

BATTERY BACKUP: Up to 3 hours

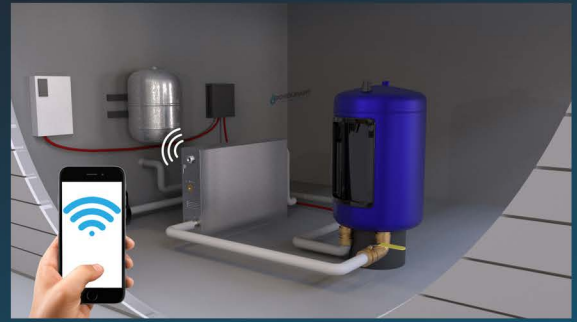
AMPERAGE DRAW: 380W during purge process.

264W when on battery backup



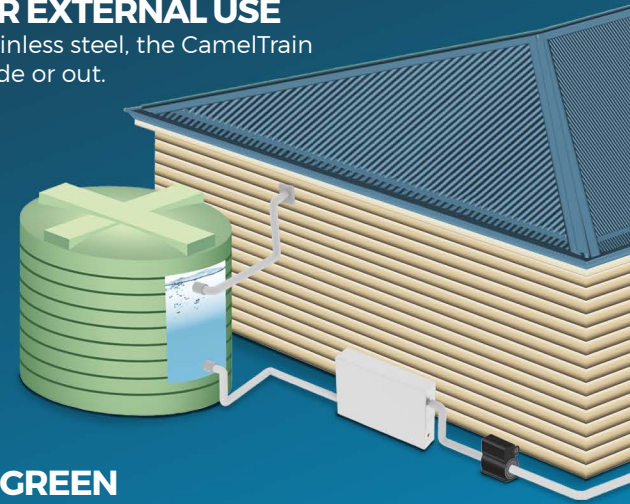
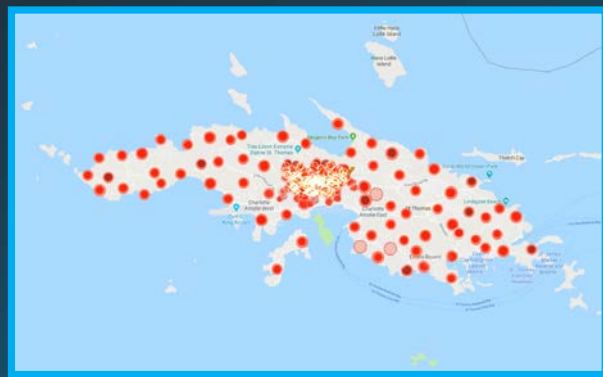
> PROGRAMMABLE AUTOMATED OPERATION

Automated flush, purge, and deep cleaning, with real-time tracking of water usage, water quality, system integrity, and system status.



> INTERNAL OR EXTERNAL USE

Built of 430 stainless steel, the CamelTrain is at home inside or out.



> INTELLIGENT PLATFORM

Monitoring for pollution in the water is just one aspect of our technology. Connect to our cloud and directly upload, download, view, and share the spectral data and analysis results. Plot the data on a geographic heat map showing trouble spots and date- and time-stamped water statistics, including:

- Daily water consumption
- Usage of battery backup *(in the event of a power failure)*
- Changes in water levels in the cistern, and projections on when refill is required
- Lowering of cistern levels not associated with consumption *(potential cistern leak)*
- Pressure loss in water lines, an indication of potential cistern pump or foot valve failure
- Continuous water usage, a possible indication of a faucet leak, or being left on.

> NATURALLY GREEN

Bondurant Technologies uses membrane technology to purify incoming water. To keep our membranes clean, CariPure uses a 100% organic solution to remove organic and inorganic material, which may cling to the insides of our unit. This organic solution is safe for plants, animals, and the environment. Designed to be a passive unit, it uses electricity once per day for about 2 minutes, unless pressure is low in the home, when our low energy usage backup pump is employed.

WARRANTY

Although the CamelTrain water purification system does remove bacteria and viruses, it is not certified to remove >99.9999% of bacteria and >99.99% of viruses required by the U.S. Environmental Protection Agency water purifier standard without the other agents. Bondurant Technologies has no control over the end use of our water filtration systems; therefore, our warranty is limited to the replacement of any component we deem defective, and any such replacement is at our sole discretion. All component manufacturers' warranties apply. Bondurant Technologies International water purification systems will remove 99.999+% of suspended solids and bacteria from most water sources, but no water filtration system can remove 100% of bacteria and viruses, and no claim of reaching 100% effectiveness is made or implied.

BONDURANT TECHNOLOGIES INTERNATIONAL INC.

P: 470.385.7188

W: bonduranttechnologies.com

E: nimon@bonduranttechnologies.com

